



Morton College

Administrative Services

Former Rocket Express Site

SW Corner of 37th Street and 54th Avenue
Cicero, Cook County, Illinois

EXISTING SITE OVERVIEW

■ GROSS SITE AREA

- SQUARE FOOTAGE 570,421
- ACREAGE 13.1

■ WORK AREA

- SQUARE FEET 498,400
- ACREAGE 11.44

■ PROJECT COST

- TOTAL COST \$2,170,000
- COST PER SQ. FT. \$3.80



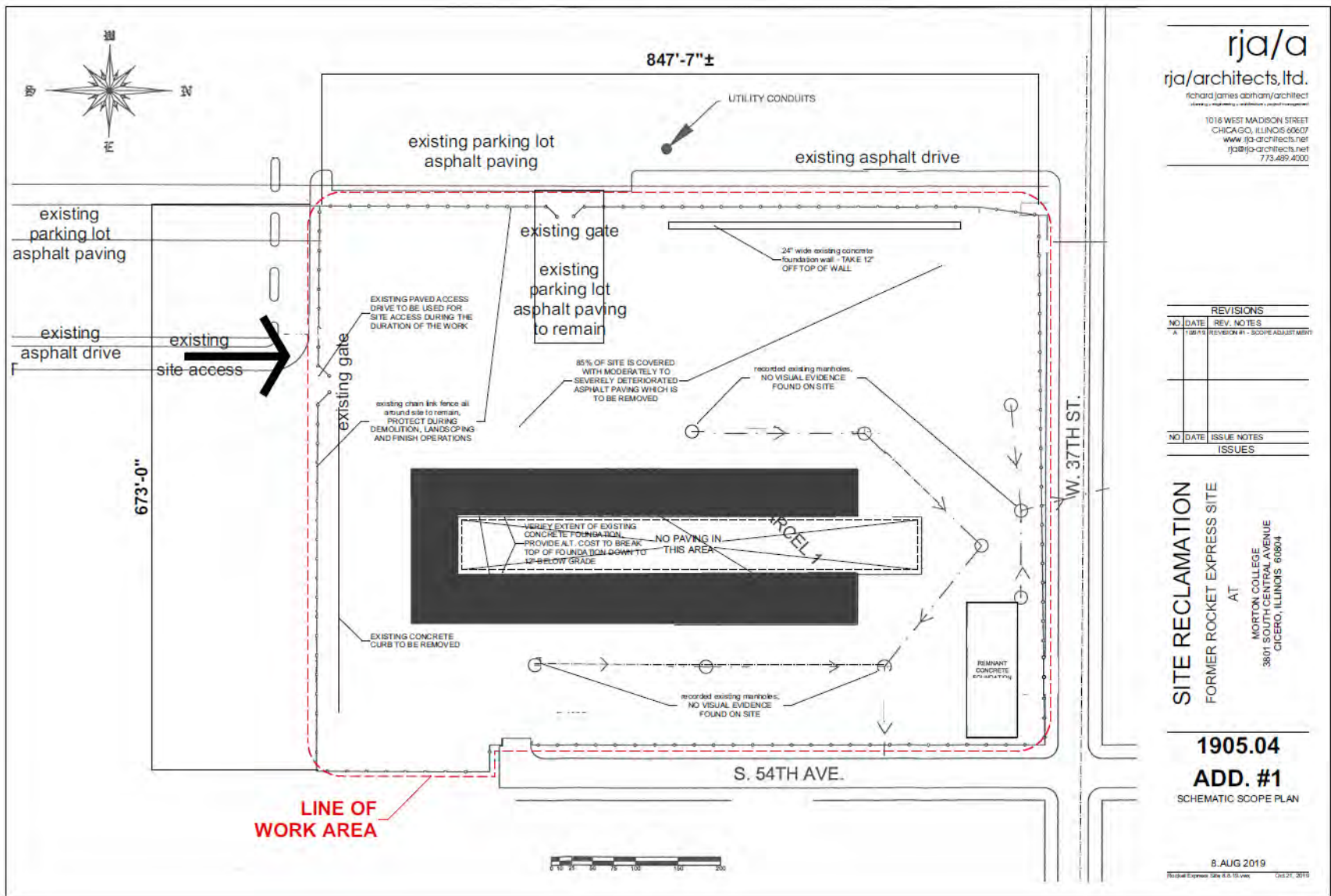
EXISTING SITE AERIAL VIEW



SITE RELATIONSHIP TO MORTON COLLEGE



DEFINED WORK AREA



rja/a
rja/architects, ltd.
richard james abitham/architect
CHICAGO, ILLINOIS 60607
www.rja-a.com
773.499.4000

REVISIONS			
NO.	DATE	REV. NO.	NOTES
A	1/18/13	REVISION #1 - SCOPE ADJUSTMENT	

NO.	DATE	ISSUE NOTES
		ISSUES

SITE RECLAMATION
FORMER ROCKET EXPRESS SITE
AT
MORTON COLLEGE
3801 SOUTH CENTRAL AVENUE
CICERO, ILLINOIS 60804



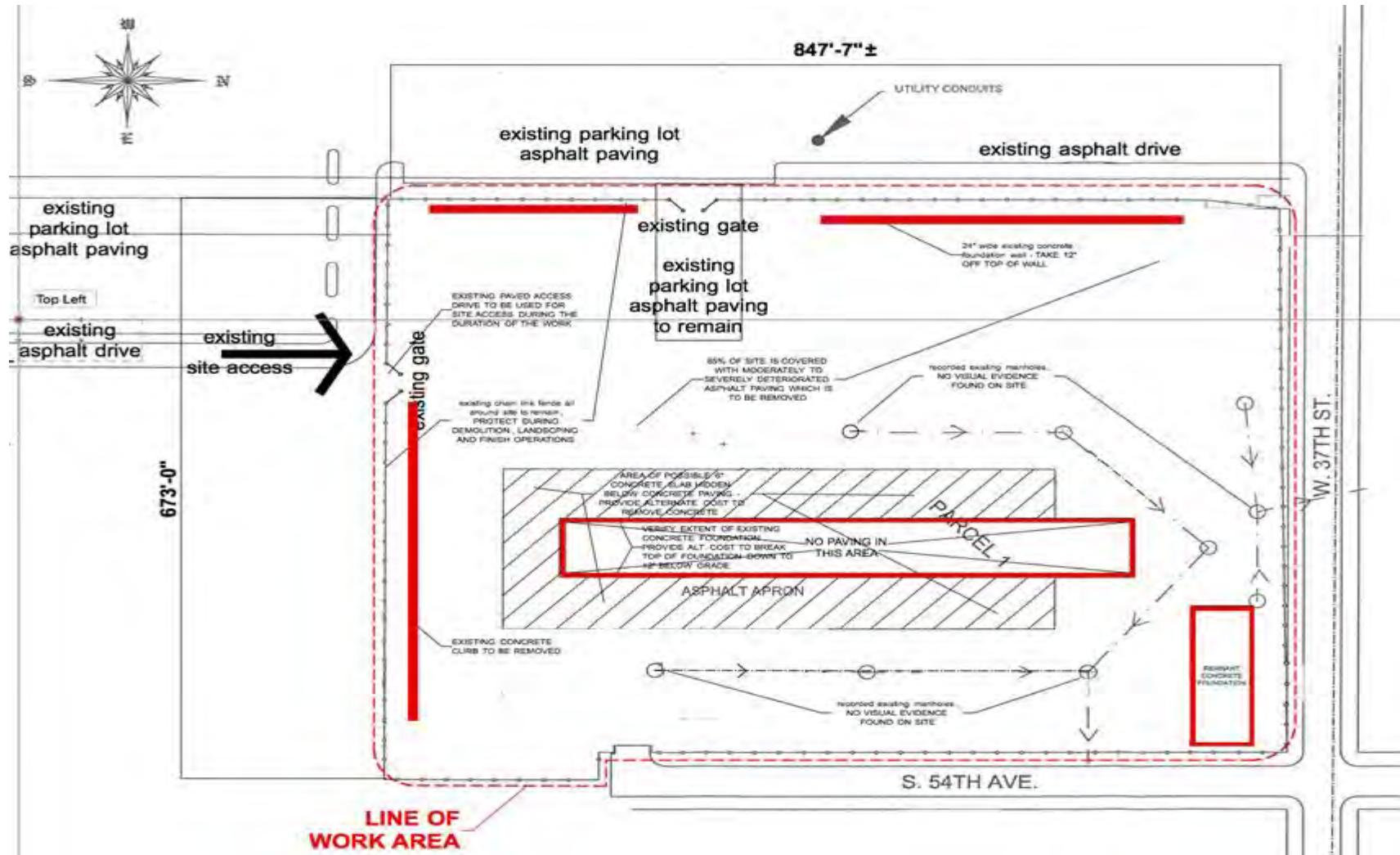
TYPICAL ON SITE EXISTING CONDITIONS

- EXISTING ASPHALT PAVING



TYPICAL ON SITE EXISTING CONDITIONS

■ CONCRETE FOUNDATIONS AND CURBS



TYPICAL ON SITE EXISTING CONDITIONS

- TYPICAL DEBRIS PILES



TYPICAL ON SITE EXISTING CONDITIONS

■ TYPICAL EXISTING CYCLONE FENCE



TYPICAL ON SITE EXISTING CONDITIONS

- EXISTING FENCE DAMAGE – DEAD TREES FALLEN ON FENCE



TYPICAL SITE CONDITIONS

- LOW WET AREA AT NE CORNER
- AND TYPICAL EXISTING FENCE



TYPICAL ON SITE EXISTING CONDITIONS

- TYPICAL EXISTING LANDSCAPING



EXISTING CONDITIONS

- SERVICE DRIVE IN USE BY MAINTENANCE DEPARTMENT



VIEW OF BERM FROM 37th STREET



SITE ACCESS FOR SITE WORK VEHICLES



SITE ACCESS AND WORK SCHEDULE

- ALL SITE ACCESS IN AND OUT OF THE SITE FOR WORK VEHICLES WILL BE FROM PERSHING ROAD ALONG THE EXISTING EAST PARKING ACCESS DRIVE AS SHOWN ON SLIDE 7 AND 15.
- THIS DRIVE CAN BE BLOCKED OFF TO COLLEGE TRAFFIC DURING WORK HOURS TO PREVENT ANY CROSS TRAFFIC BETWEEN CONSTRUCTION VEHICLES AND COLLEGE TRAFFIC.
- NO TRAFFIC WILL ACCESS THE SITE VIA 37TH STREET OR 54TH AVENUE.
- WORK HOURS WILL BE MONDAY THRU FRIDAY 8AM TO 5PM WITH NOISE MINIMIZED UNTIL 8:30 AM.
- CONTRACTOR ANTICIPATES A 90 DAY DURATION FOR THE PROJECT.
- A TEMPORARY “HAULING DRIVE” WILL BE CONSTRUCTED OVER THE EXISTING CONCRETE APPROACH DRIVE AT THE SOUTH GATED SITE ENTRY. THIS TEMPORARY DRIVE WILL PROTECT THE EXISTING SLAB AND CURB AND BE USED AS A CLEANING AREA TO REMOVE EXCESS DIRT FROM THE VEHICLES EXITING THE SITE.
- EQUIPMENT WILL BE UTILIZED TO MINIMIZE DUST ALONG THE ACCESS DRIVE.
- DUST AND DEBRIS CONTAINMENT MEASURES WILL BE UTILIZED ALONG WITH ANY APPLICABLE STORM WATER MANAGEMENT MEASURES.
- CONTRACTOR VEHICLES AND STAGING AREA WILL BE ALONG THE ATHLETIC FIELD PARKING AREA AND RESTRICTED TO THE AREA NEAREST THE SITE ACCESS GATE.



FINAL CONFIGURATION

